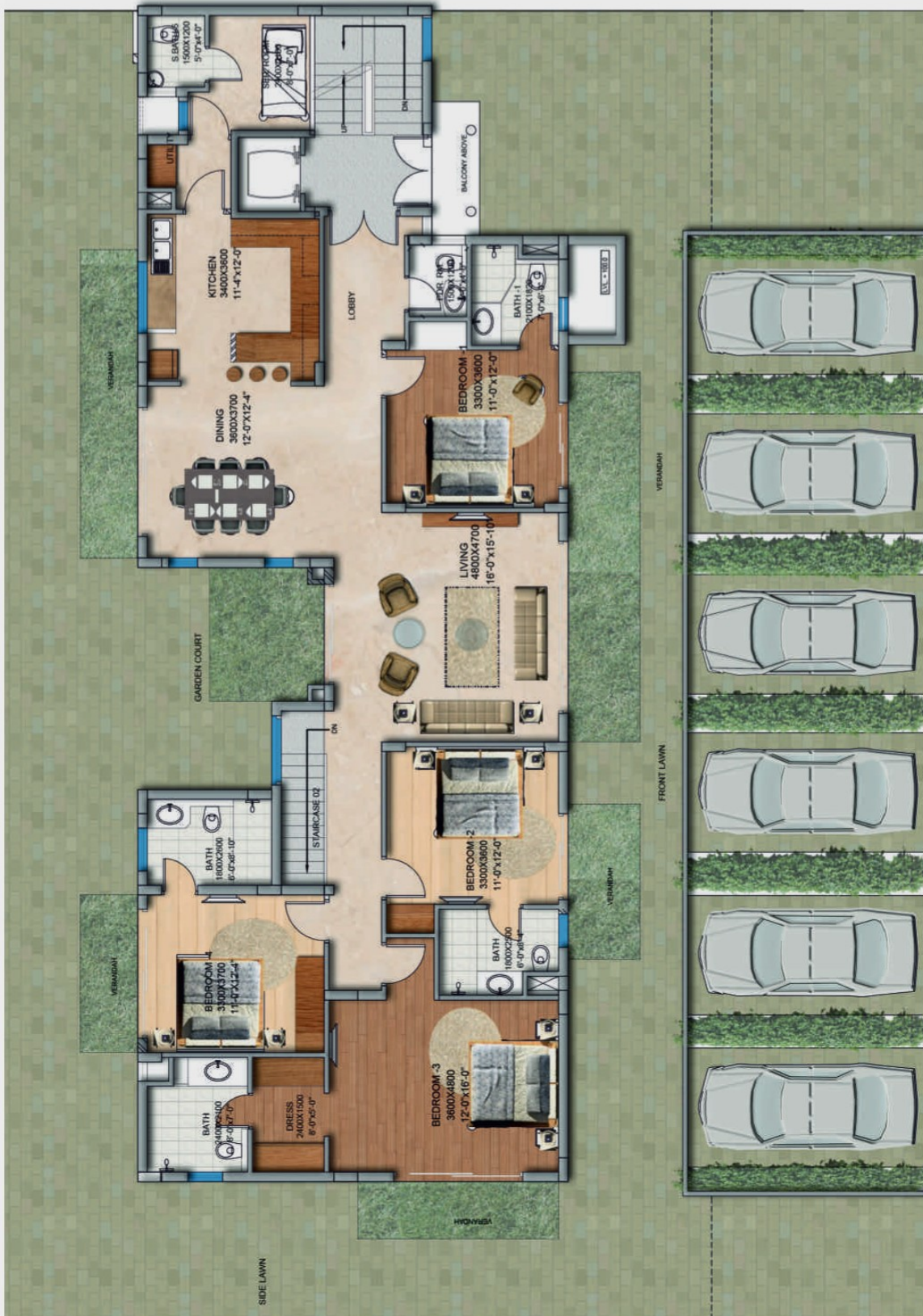


495 SQ. YDS. GROUND FLOOR PLAN

4 BHK + 6T + Basement



Plot Size (in sq.yds)	Floor	Covered Area (in sq.ft.)	Carpet Area (in sq.ft.)	Balcony/Verandah (in sq.ft.)	Basement (in sq.ft.)	Common Floor (in sq.ft.)	Total Built-Up (in sq.ft.)
495	Ground Floor	2058.61	1692	441	901.48	158.91	3560

1 Sq. Metre = 10.76 Sq. Feet.

1 Sq. Metre = 1.196 Sq. Yards

495 SQ. YDS. FIRST FLOOR PLAN

4 BHK + 6T + Basement



Plot Size (in sq.yds)	Floor	Covered Area (in sq.ft.)	Carpet Area (in sq.ft.)	Balcony/Verandah (in sq.ft.)	Basement (in sq.ft.)	Common Floor (in sq.ft.)	Total Built-Up (in sq.ft.)
495	First Floor	1991.34	1643	398.26	566.29	186.11	3142

1 Sq. Metre = 10.76 Sq. Feet.

1 Sq. Metre = 1.196 Sq. Yards

495 SQ. YDS. SECOND FLOOR PLAN

3 BHK + Lounge + 5T + Basement

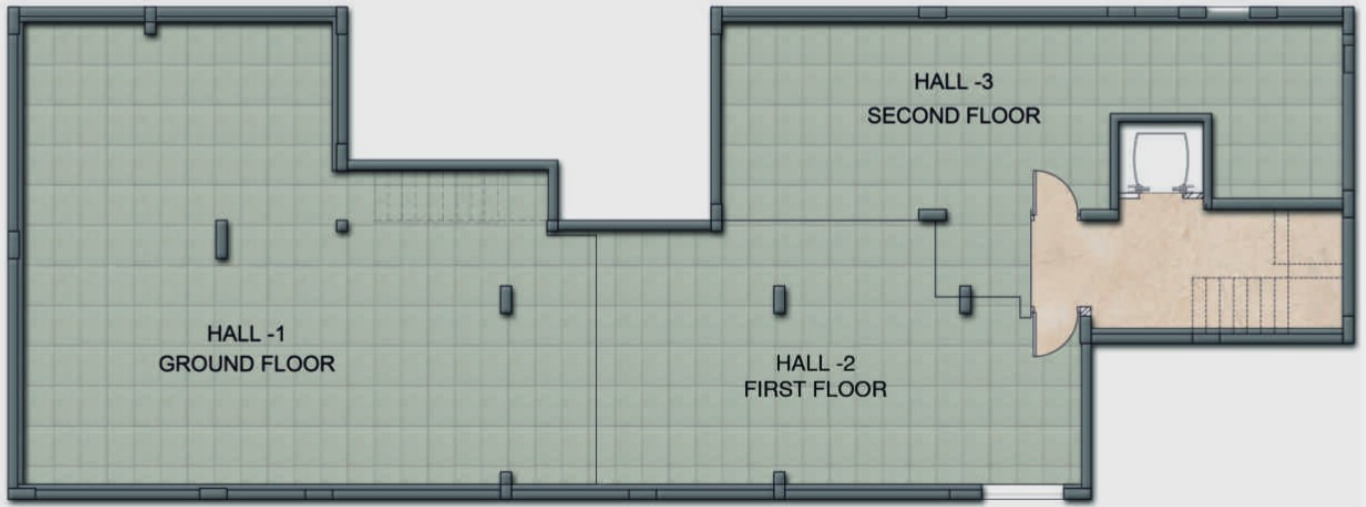


Plot Size (in sq.yds)	Floor	Covered Area (in sq.ft.)	Carpet Area (in sq.ft.)	Balcony/Verandah (in sq.ft.)	Basement (in sq.ft.)	Common Floor (in sq.ft.)	Total Built-Up (in sq.ft.)
495	Second Floor	1946.99	1605	409.03	560.26	189.72	3106

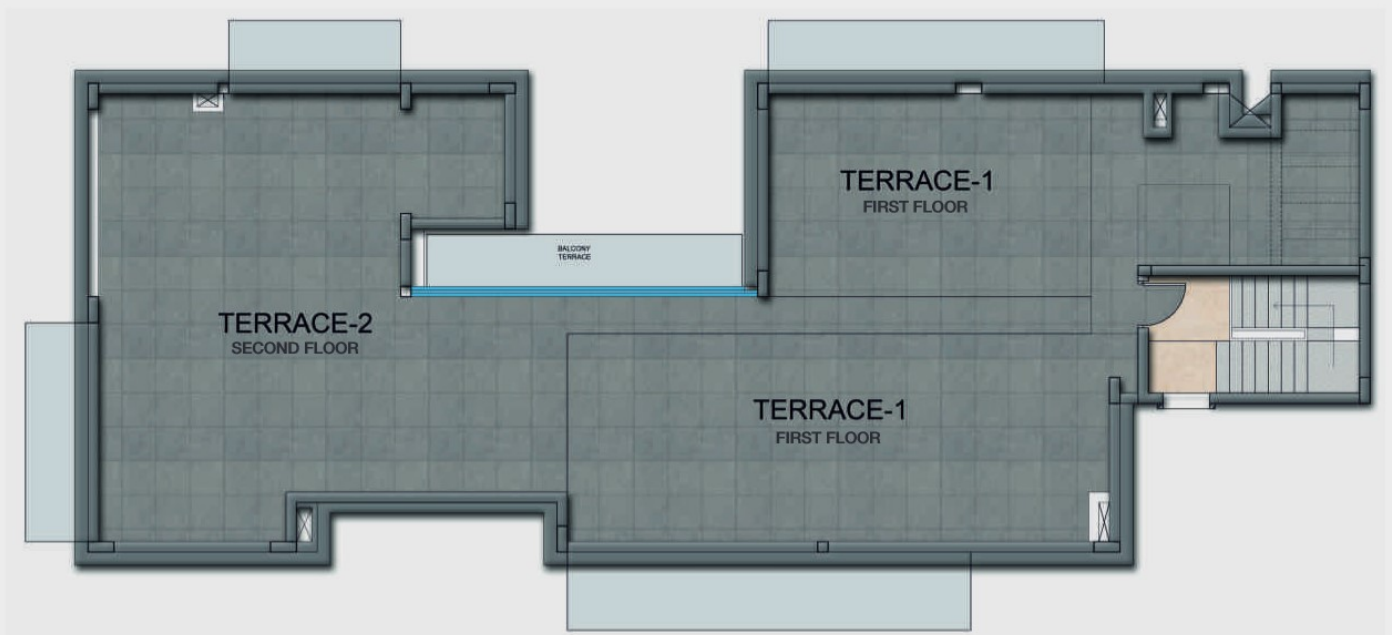
1 Sq. Metre = 10.76 Sq. Feet.

1 Sq. Metre = 1.196 Sq. Yards

495 SQ. YDS. BASEMENT FLOOR PLAN



495 SQ. YDS. TERRACE FLOOR PLAN



1 Sq. Metre = 10.76 Sq. Feet.

1 Sq. Metre = 1.196 Sq. Yards