

# 303 SQ. YDS. GROUND FLOOR PLAN

3 BHK + 3T + Basement



Plot Size (in sq.yds)	Floor	Covered Area (in sq.ft.)	Carpet Area (in sq.ft.)	Balcony/Verandah (in sq.ft.)	Basement (in sq.ft.)	Common Floor (in sq.ft.)	Total Built-Up (in sq.ft.)
303	Ground Floor	1383.71	1132	215.28	497.51	132.5	2229

1 Sq. Metre = 10.76 Sq. Feet.

1 Sq. Metre = 1.196 Sq. Yards

# 303 SQ. YDS. TYPICAL FLOOR PLAN

3 BHK + 3T + Basement

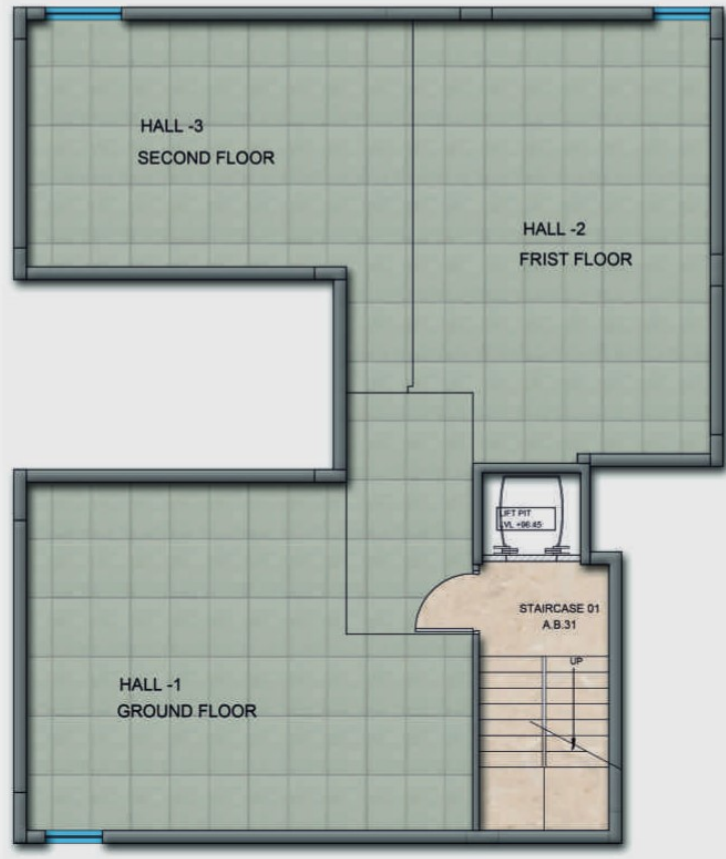


Plot Size (in sq.yds)	Floor	Covered Area (in sq.ft.)	Carpet Area (in sq.ft.)	Balcony/Verandah (in sq.ft.)	Basement (in sq.ft.)	Common Floor (in sq.ft.)	Total Built-Up (in sq.ft.)
303	First Floor	1361.96	1132	215.28	451.33	153.43	2182
303	Second Floor	1361.96	1132	215.28	407.52	153.24	2138

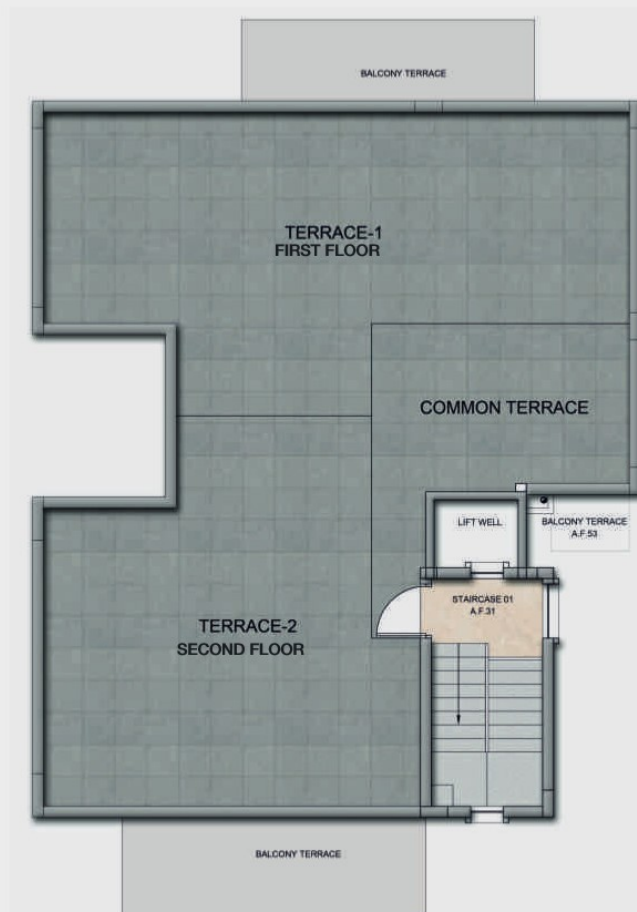
1 Sq. Metre = 10.76 Sq. Feet.

1 Sq. Metre = 1.196 Sq. Yards

## 303 SQ. YDS. BASEMENT FLOOR PLAN



## 303 SQ. YDS. TERRACE FLOOR PLAN



1 Sq. Metre = 10.76 Sq. Feet.  
1 Sq. Metre = 1.196 Sq. Yards